



Meet
OTTUMWA
Where Iowa Meets The World

Official Visitors Guide of Ottumwa & Wapello County



Welcome to Ottumwa and Wapello County!

Whether this is your first visit to our community or your 50th, we're so glad you're here. You'll find the best combination of big-city amenities and small town hospitality. Join us for diverse menus, historic accommodations, world-class conference facilities and a calendar full of Iowa's most eclectic events.

Meet Ottumwa: Where Iowa Meets the World. It's not just a slogan - it's a way of life here. Ottumwa residents represent more than 40 nationalities, and that diversity is seen every day in our local restaurants, businesses and events. We invite you to experience the world's cultures and meet the people who make Southeast Iowa unique. From award-winning Latin cuisine to family-owned icons to real-deal American barbecue, you're sure to find a menu everyone will love.

Get out and explore everything Wapello County has to offer. Hike on Ottumwa's 16 miles of river trails. Find out why we're the Video Game Capital of the World. Have your parody picture taken at the American Gothic House. Visit the Antique Airplane Associations Air Power Museum. The possibilities are endless!

As you plan your visit to Ottumwa and Wapello County, make sure you check out our eclectic events calendar. From balloon races and car shows to nationally renowned performers and local music to international festival and community markets, there is always something happening in our community.

As you turn the pages of this guide, we'll show you more than just where to go, what to do and where to stay. We'll share who we are, what we love and why you should come join us.

We can't wait to meet you!

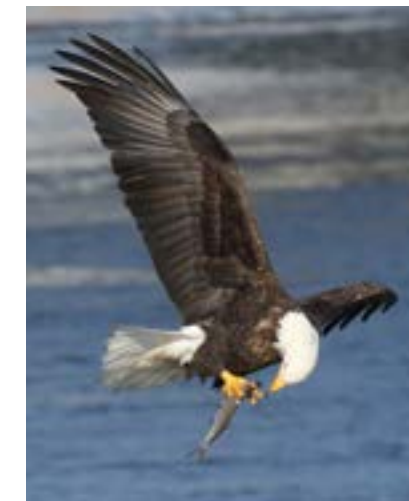


Laura Carrell,
Executive Director of
Meet Ottumwa



Contents

- 4** About Ottumwa
- 8** Arts & Culture
- 12** History
- 16** Recreation
- 24** Shopping
- 26** Dining
- 27** Lodging
- 30** Maps





It's time for you to Meet Ottumwa!

From world-class performing arts venues to international cuisine to attractions and green space that are just calling your name, there's something for everyone in Ottumwa and Wapello County!

Make your next trip one to remember when you choose Ottumwa, Iowa as your host location. We combine big-city amenities with small-town hospitality. As you learn more about our community in the pages to come, you'll discover all the venues, accommodations, restaurants and attractions that make us the perfect destination for your next trip. Whether it's a family trip, business travel or just a weekend away, you'll love your time here.



Conveniently located in Southeast Iowa

Average drive time to Ottumwa:

Des Moines: 1h 30m	Davenport: 2h 20m	Kansas City: 3h 30m	Minneapolis: 4h 50m
Cedar Rapids: 1h 50m	Omaha: 3h 30m	St. Louis: 4h 5m	Chicago: 5h 10m

Fast Facts



We're Diverse

Ottumwa is home to more than **40 nationalities**. That diversity is showcased in our local businesses. Ottumwa is home to more than 20 international stores and restaurants. They represent Mexico, Micronesia, Vietnam, The Democratic Republic of the Congo and more.

For Us, The Sky's The Limit

Southwest of Ottumwa is the **Antique Airfield**. It was founded in 1953 by the Antique Airplane Association as a way to fly, preserve, share and promote early flying machines.



We're a Little Prickly

Not because of our personalities, but because we're home to the **Eddyville Sand Dunes**, an area where you can find rare plants and animals such as prickly pear cactus.

We've Got Spirit

Ottumwa is the birthplace of the **foam finger**. High school senior Steve Chmelar created the original prototype for the 1971 Boy's State Basketball Finals.



We're the Video Game Capital of the World

Back in the early 1980's, an Ottumwa video game arcade named Twin Galaxies began keeping official high scores for video games. Ottumwa hosted the first North American Video Game Olympics in Fall 1982, earning the title of **Video Game Capitol of the World**.



Meet OUR SEASONS



Summer

School is out, and that means it's time for some summer fun! When you need to cool off, the **Beach Ottumwa** opens Memorial Day Weekend, you can attend one of our many **summer events** for some entertainment and you can unwind and take your furry friend to the **Bark Park**, Ottumwa's off-leash dog park.



Winter

Just because the weather gets cold, it doesn't mean the fun has to stop. There are plenty of activities for you to get bundled up for during winter. Go sledding at **Wildwood Park**, take the family through the **Holiday Nights 'N Lights** display, or check out the **Bald Eagles** along the Des Moines River.

Spring

As we move into warmer weather, it's the perfect opportunity to hit one of our many **disc golf courses, dine outdoors** on the patio of one of our local restaurants and hike the **16 miles of trails** along the Des Moines River. With thousands of acres of green space in Wapello County to explore, you might never want to go back indoors!



Fall

As the weather cools down, there's still so much to do! Grab a brat and a brew at **Oktoberfest** and check out some indie horror films at **Halloweenapalooza**. Don't forget to visit **Greater Ottumwa Park** and **Pioneer Ridge Nature Area** to see the changing colors. We love sweater weather around here, so come join us.



Meet OUR EVENTS

We love community events, and we would love you to be part of them. When you plan your trip to Wapello County, be sure to visit meetottumwa.org/events to see what's happening while you're here! Here is just a snapshot of the events that happen around our community every year.



February
Bullriders of America Finals



April
Ladies Night Out



June
Ottumwa Pride Block Party



June
Wapello County Fair



June
Elks 347 Pro Balloon Races



July
Greater Ottumwa Rodeo



August
Midwest Ford Fest



September
VIVA Ottumwa International Festival



October
Oktoberfest



October
Halloweenapalooza



November
Bacontown

For a full list of places to visit, visit meetottumwa.org/explore

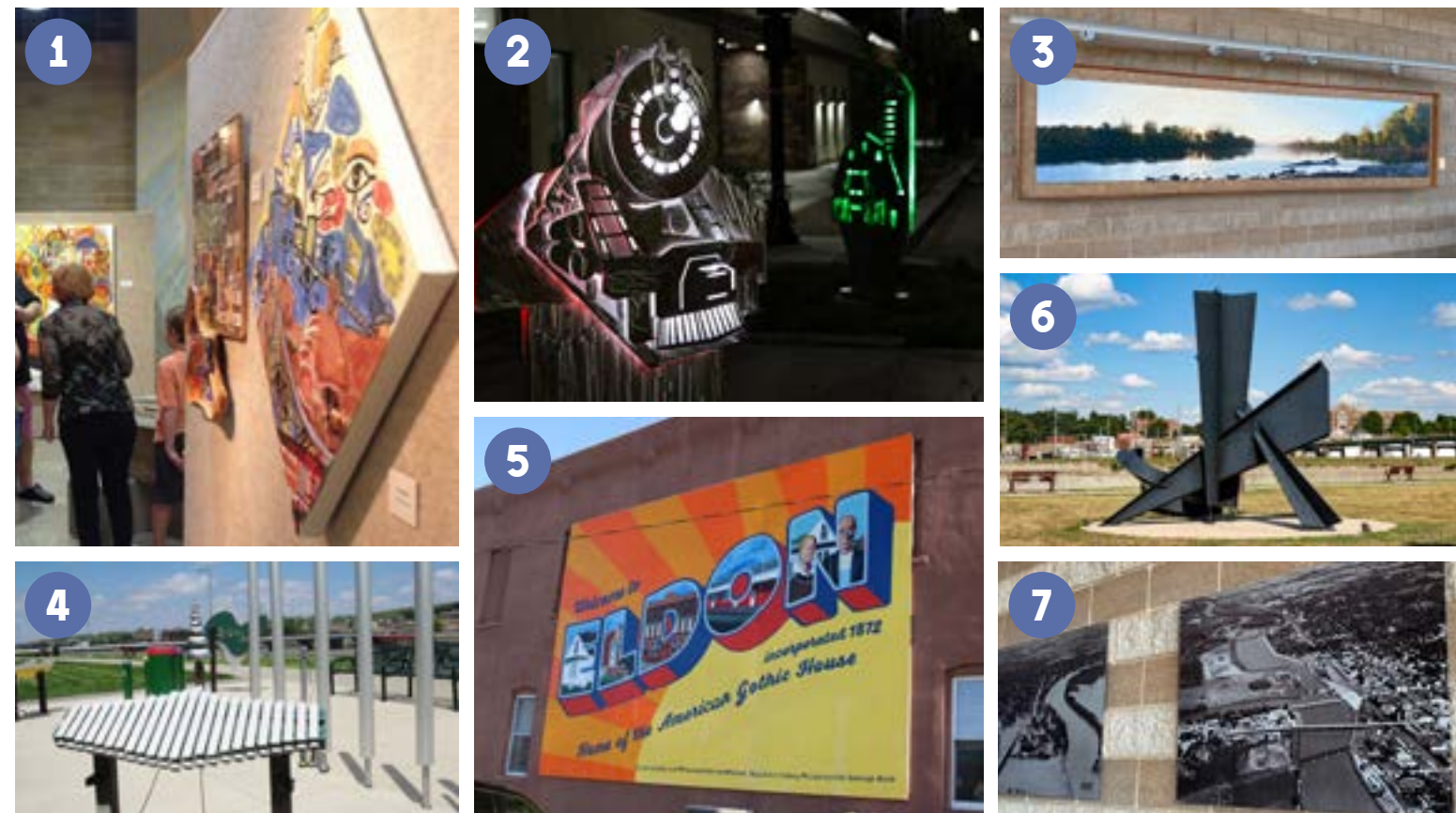
Meet THE ARTS

Art Installations & Galleries



Bridge View Center

The Bridge View Center is Southeast Iowa's premiere performing arts venue. The center is home to a state-of-the-art, 664-seat theater and 30,000-square-foot expo hall. Audiences have enjoyed Clint Black, Foreigner, Blippi, symphony orchestras and performances from the Ottumwa Community Players, Ottumwa Community Children's Playhouse and the American Gothic Performing Arts Festival. It is also home to several public art displays that include the Freedom Rock, a Michael Lemberger photography collection, an oil on canvas by Fred Easker and Harmony Park, an interactive musical exhibit on the green space behind the venue.



1

IHCC Art Gallery

525 Grandview Ave, Ottumwa
The Indian Hills Community College Art Gallery on the Ottumwa campus continually houses some of the finest art in southeast Iowa. The gallery hosts national traveling exhibits, as well as works created by local artists.

2

Downtown Art Tour

Downtown, Ottumwa
Along the streets and alleys of downtown Ottumwa, you will find more than 20 art installations. Main Street Ottumwa and the Ottumwa Area Arts Council have commissioned murals and other artwork from area artists, enriching the lives of residents and visitors alike.

3

Fred Easker's Bridgeview

102 Church St, Ottumwa
In 2006, Fred Easker was commissioned by the Fahrney Beautification Trust Fund to create a piece for Bridge View Center. The piece is located on the north side of the building at the entrance to the theater.

4

Harmony Park

102 Church St, Ottumwa
Harmony Park is an interactive art installation. It includes playable, outdoor musical instruments ranging from chimes to drums. With these outdoor instruments, there are no wrong notes, allowing musicians of all ages and abilities to create a beautiful melody.

5

Eldon Mural

421 W Elm St, Eldon
The city of Eldon commissioned Eldon native and University of Iowa graduate Katlyne Hummell Underhill to create a mural that celebrated Grant Wood and his art style. The 20- by 30-foot mural hangs on the side of city hall at the corner of Elm and 5th Street.

6

Ferber Sculpture

102 Church St, Ottumwa
The Herbert Ferber sculpture stands 18 feet tall and is an impressive piece made of welded steel to represent a hearth and plow. The sculpture was erected in 1977-78 when Ferber was commissioned by the City of Ottumwa.

7

Michael Lemberger Collection

102 Church St, Ottumwa
Michael Lemberger was an award-winning photographer and artist in Ottumwa. He was also an avid photograph collector. Ten copies of his photographs depicting Ottumwa in the 1890's are available for viewing in the Bridge View Center lobby.

Performing Arts



1



2



3



4



5



6



7



8



9

1 American Gothic Performing Arts Festival

The American Gothic Performing Arts Festival is an annual educationally based festival celebrating the performing arts, specifically musical theater, in an open and friendly atmosphere. The multi-event festival features a variety of performances in several locations throughout Ottumwa and Wapello County.

2 Ottumwa Civic Music Association

The Ottumwa Civic Music Association was formed in 1929 to bring quality nationally and internationally known musical performances to Ottumwa.

3 Ottumwa Community Players

The Ottumwa Community Players are the local theater group for Ottumwa and the surrounding area. They perform everything from dramatic plays to musicals to improv shows.

4 IHCC Performing & Visual Arts

The Indian Hills Community College Performing and Visual Art Department features numerous performances throughout the year. From poetry readings and theatre performances to band and chorus concerts.

5 Ottumwa Area Community Chorus

The Ottumwa Area Community Chorus' mission is to make the joy of performing high-quality choral music available to everyone. They perform several times a year, and performances include their own concerts as well as collaborative performances with other regional musical groups.

6 Ottumwa Community Children's Playhouse

The Ottumwa Community Children's Playhouse (OCCP) calls the theater at the Bridge View Center home, giving young people the opportunity to perform for their community.

7 Southeast Iowa Symphony Orchestra

The Southeast Iowa Symphony Orchestra (SEISO) has been providing exceptionally high-quality musical performances to Ottumwa, Burlington and Mount Pleasant since 1950. The SEISO is recognized as one of Iowa's most prominent community-based orchestras.

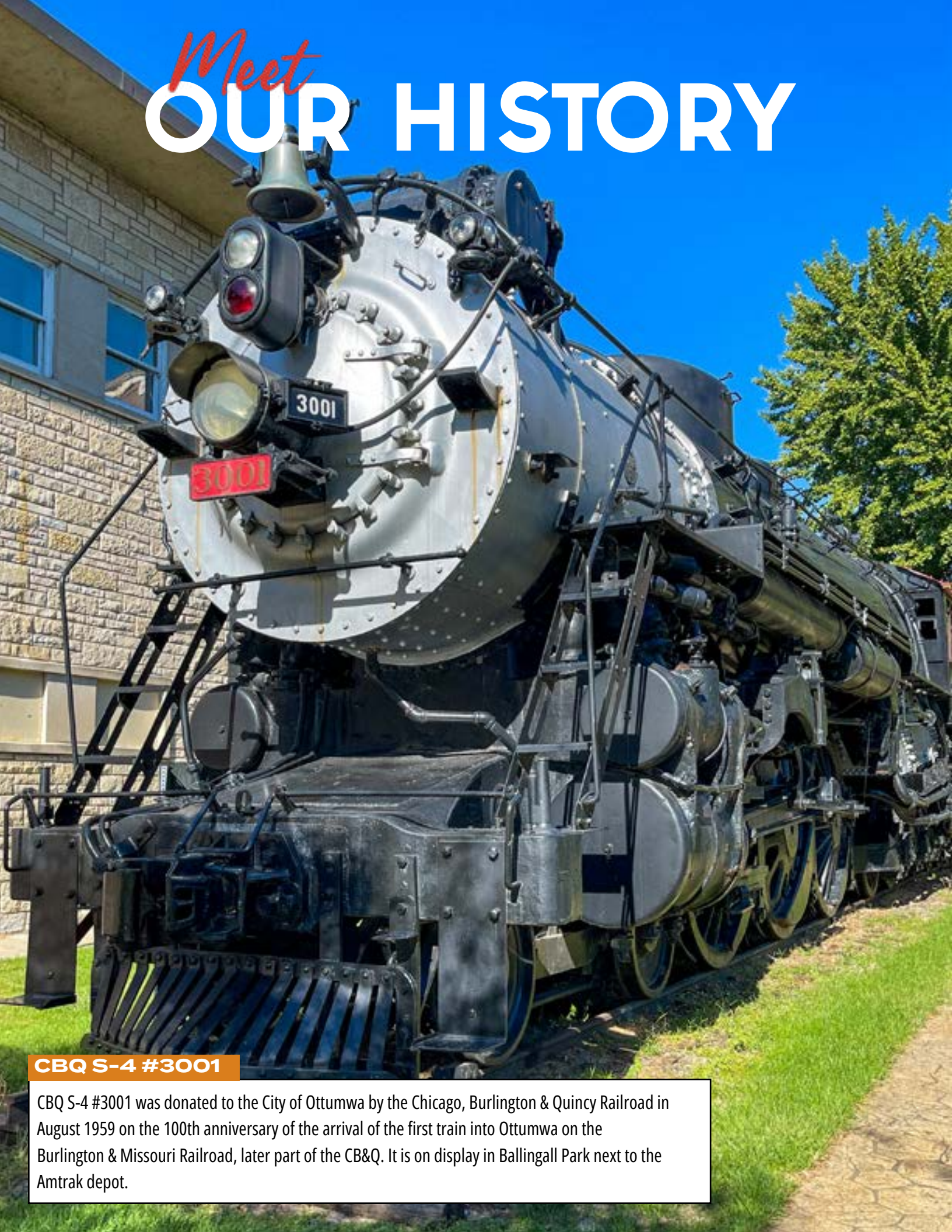
8 Ottumwa Municipal Band

The band is made up of musicians from Ottumwa and surrounding communities and has the distinction of being the oldest continuously operating municipal band in Iowa. The band performs free of charge in Central Park during June and July.

9 Ottumwa Symphony Orchestra

The Ottumwa Symphony Orchestra strives to inspire, enrich and build a sense of community through the power of music. OSO delivers outstanding classical music performances and provides musical educational opportunities to enhance the quality of life for all residents in Wapello County.

Meet OUR HISTORY



CBQ S-4 #3001

CBQ S-4 #3001 was donated to the City of Ottumwa by the Chicago, Burlington & Quincy Railroad in August 1959 on the 100th anniversary of the arrival of the first train into Ottumwa on the Burlington & Missouri Railroad, later part of the CB&Q. It is on display in Ballingall Park next to the Amtrak depot.

Veteran Memorials



1

All Veterans Memorial

1 Joe Lord Memorial Dr, Ottumwa

The All Veterans Memorial in Greater Ottumwa Park is dedicated to all who have served in the Armed Forces. The tribute features granite monuments representing each conflict the United States military has participated in.

2

Curtis King Gravesite

18635 Hwy 63, Eddyville

U.S. muster rolls record Curtis King, at age 80, as the oldest man serving in the Union Army. His gravesite is located along Highway 63 between Ottumwa and Eddyville near the Eddyville Road turnoff.

3

Wapello County Freedom Rock

102 Church St, Ottumwa

The Wapello County Freedom Rock, created by Ray "Bubba" Sorensen in 2014, depicts Gold Star Banner, American flag, bald eagle, Tuskegee Airmen, National Guard Unit 833rd and Naval Air Station Ottumwa.

4

Civil War Soldier

226 Hazel St, Agency

This monument located in the Agency Cemetery is made up of a granite pillar with the names of veterans and those buried in the South. A soldier stands atop the pillar.

3



Eldon Veterans Memorial

408 W Elm St, Eldon

This memorial is dedicated to the local men and women who have served in the Armed Forces. It can be found at the corner of Elm and 4th Street in Eldon by the Rock Island Train Depot.

5



Soldier in the Park

City Park, Eddyville

This 12-foot Civil War monument can be found in the city park in Eddyville. The monument depicts a soldier standing on top of a pillar with the names of soldiers from the area who served in the Civil War inscribed on the sides.

6



Civil War Wood Carving

1302 N Court St, Ottumwa

Iowa chainsaw sculptor Gary Keenan crafted this 10-foot Civil War soldier from a tree that was more than 200 years old and needed to be taken down. It overlooks the Civil War section of the Ottumwa Cemetery.

7



Wapello County Veterans Memorial

N Court & 4th St, Ottumwa

This 25-foot monument was erected in 1919 and dedicated to the Heroic Sons, Soldiers and Sailors of Wapello County. The 15-foot pillar is topped with a bronze pillar with four bas-reliefs at the base.

8



Museums



Historic Buildings & Sites



1
Blakesburg Community Museum
 205 Main St, Blakesburg

This small museum is curated by the Blakesburg Historical Preservation Society and is located in the town's original US Post Office. The museum has a focus on preserving the history of the community.

2
Iowa Heartland History Connection
 700 Farm Credit Dr, Ottumwa

The Iowa Heartland History Connection exhibits draw from its 20,000-item collection and trace the history and cultures of the region from natural history and pre-Columbian life to 19th-century agricultural and Victorian America.

3
American Gothic House & Center
 300 American Gothic St, Eldon

Iowa artist Grant Wood sketched this house on a 1930 visit to Eldon and that summer depicted it as the backdrop for his world-famous painting, American Gothic. The adjacent center includes exhibits, a gift shop and a media room about the artist for visitors of all ages.

1
Carnegie Libraries
 Eldon & Ottumwa

Between 1883 and 1929, more than 2,500 libraries were built with money donated by Andrew Carnegie. Wapello County is home to two of them. The Ottumwa Public Library was built in 1901, and the Eldon Public Library was built in 1913.

2
Chief Wapello Gravesite & Park
 6899 Chief Wapello Rd, Agency

Chief Wapello's Gravesite & Memorial Park is the original site of the Native American Agency where the chiefs of the Sac and Fox Nation signed a treaty. Located in the park are gravesites of Chief Wapello and General Joseph M. Street, first administrator of the Native American Agency.

3
Swedish American Immigrant Memorial
 10237 240th Ave, Blakesburg

Located on the grounds of the Munterville Lutheran Church, this memorial depicting a Swedish American family honors the many Swedish immigrants that settled in Southeast Iowa in the later half of the 19th century.

4
Eddyville Community Museum
 705 Main St, Blakesburg

This quaint historical museum is located in the heart of friendly downtown Eddyville. It is a small but growing museum that gladly welcomes visitors to explore the ever-changing displays which depict their history for future generations.

5
Rock Island Train Depot
 405 KD Ave, Eldon

The historic Rock Island Train Depot in Eldon is a railroad museum with numerous displays and serves as a meeting place for city-wide activities. In its day, the depot served the needs of local travelers and the US Postal Service.

6
Antique Airfield & Air Power Museum
 2201 Bluegrass Rd, Ottumwa

The Air Power Museum's mission is to preserve our aviation heritage as well as educate both present and future generations about that heritage. The APM has more than 20,000 feet of display space and features a large collection of aircraft, many of which are flown regularly.

4
Mars Hill Church & Cemetery
 1011 100th Ave, Bloomfield

Mars Hill is a historic church and cemetery located south of Ottumwa. The church was built in the 1850's and is said to be the largest log building in Iowa and the only log cabin church still in use in the United States.

5
Ottumwa Historic Districts
 Ottumwa

Ottumwa is divided into seven districts by the Ottumwa Historic Preservation Commission. Drive through them all using the interactive map at meetottumwa.org/ explore and experience what the city would have been like more than a century ago.

6
McHaffey Opera House
 414 W Elm St, Eldon

This century-old house is listed on the National Register of Historic Places with a grassroots group hard at work to restore the beautiful building. Irish immigrant David McHaffey built the opera house in 1891 during the city's days as a thriving railroad town.

Meet OUR COURSES



Cedar Creek Golf Course

Cedar Creek is an 18-hole public course with a slope rating of 122. The course is recognized for the excellent condition of its greens and its overall ease of playability. Depending on which tees you choose, you can enjoy a good test of golf or a fun, casual round.

Disc Golf

Ottumwa and Wapello County serve as a mecca for disc golf enthusiasts. Wapello County is home to 8 disc golf courses, 5 of which can be found in Ottumwa. It also has 3 stores that sell disc golf equipment, at least 2 disc golf leagues, and is the home of the Ottumwa Fall Classic, one of the oldest disc golf tournaments in Iowa.



Chippewa Creek | 9 holes
300 American Gothic St, Eldon



Christ's Church | 18 holes
12627 River Rd, Ottumwa | Must contact 641.799.1544



Franklin Park | 18 holes
Walnut & 2nd St, Ottumwa



Indian Hills Community College | 18 holes
525 Grandview Ave, Ottumwa



Memorial Park | 19 holes
Jefferson & Elm St, Ottumwa



Pioneer Ridge Nature Area | 10 holes
1339 Hwy 63, Bloomfield



Sandy Dunes | 9 holes
Wapello Mahaska Rd, Eddyville (behind the high school)



Wildwood Park | 27 holes
1821 W Finley Ave, Ottumwa

Meet OUR PARKS



Bark Park

Located off Highway 34 in Ottumwa, the Bark Park is an off-leash area for dogs and their owners to run and play together. It has fenced-in areas for both big dogs and small dogs along with an agility course.



Greater Ottumwa Park

Ballingal Park

210 W Main St, Ottumwa
Located outside the Amtrak depot, Ballingal Park is home to a historic steam engine and a lighted fountain.



Bell Park

4 Eleanor Dr, Ottumwa
A friendly neighborhood park with a shelter, playground, and tennis/basketball/pickle ball courts.



Central Park

N Court St & 4th St, Ottumwa
Situated between City Hall and the library, Central Park is Ottumwa's "townsquare" park with an amphitheater stage, picnic tables, and benches.



Foster Park

E Main St & Foster St, Ottumwa
This park is home to a playground, shelter, picnic tables, restrooms, and drinking fountains.



Franklin Park

Walnut St & 2nd St, Ottumwa
This 2-acre park has picnic tables, a disc golf course, and playground equipment.



Greater Ottumwa Park

Hwy 34 & 63, Ottumwa
Consisting of four quadrants at the intersection of Highway 34 and Highway 63. Ponds, playground equipment, drinking fountains, shelters with BBQ grills, sand volleyball, fishing, camping, trails, softball, basketball, tennis, and soccer are available at this 340-acre park.



Hillcrest Park

Top of Court Hill, Ottumwa
This neighborhood park at the crest of Court hill has a playground, shelter, and facilities for baseball, basketball and tennis.



Jefferson Park

Jefferson St & Gara St, Ottumwa
Playground equipment, picnic tables, and a basketball court are available at this 2-acre park.



Memorial Park

Jefferson St & Elm St, Ottumwa
Located under the water tower, this 47-acre park is one of the most used in Ottumwa. It is home to a playground, disc golf course, tennis/pickle ball courts, mountain bike trail, shelters, picnic tables, and grills.



Pickwick Park

Keota St & Schuyler St, Ottumwa
Located near Douma School, this 5-acre park has a baseball field, bleachers, shelter, picnic tables, and a playground.



Skate Park

Market St, Ottumwa
The skate park features miniramps, a spine ramp, street course with boxes, banks, and a quaterpipe.



Sycamore Park

101 Church St, Ottumwa
Next to the Beach Ottumwa, Sycamore Park features a playground and picnic shelter and is adjacent to the levee trail system.



Troeger Park

Across from Bridge View Center, Ottumwa
This shady retreat has tennis courts and horseshoe pitches available.



Union Park

1900 W 2nd St, Ottumwa
The Mid-West Little League call this park home. Also available is a shelter, restrooms, picnic tables, a playground, drinking fountains, and basketball and tennis courts.



Wildwood Park

1821 W Finley Ave, Ottumwa
This park has shelters, picnic tables, restrooms, drinking fountains, playgrounds, a disc golf course, trails, baseball and softball fields, and tennis and basketball courts. In the winter, its sledding hill is the stuff of legends.



Key

Meet THE OUTDOORS



Pioneer Ridge Nature Area

Located south of Ottumwa on Highway 63, Pioneer Ridge Nature Area is the headquarters for the Wapello County Conservation Board. With Pioneer Ridge Nature Center on site, a major focus of this area is educating both youth and adults in environmental and natural resource management issues. An extensive trail system allows users to traverse this beautiful area by foot, bike or horseback.

Eddyville Sand Dunes Prairie

Bluewing Marsh

1216 85th St, Batavia
This 40-acre grassland is an excellent place to see migrating waterfowl during the fall and spring.



Cardinal Wildlife Area

4558 35th Ave, Eldon
The majority of this 40-acre area has been restored to native prairie. An oak grove occurs on the east end of the property with a creek flowing along most of the northern border.



DeVol Wildlife Area

Hwy 149 & 170 St, Ottumwa
This area has been restored to native prairie and serves as a great spot for wildlife viewing and photography.



Eddyville Sand Dunes Prairie

23125 182 St, Eddyville
This area consists of a patchwork of wind-blown sand and associated wetlands and woodland that are home to some of Iowa's rarest plants and animals.



Garrison Rock Resource Management Unit

6951 Cliffland Rd, Ottumwa
Garrison Rock is a large sandstone outcrop overlooking the Des Moines River Valley. It is an excellent place to hike, picnic, and explore the caves.



Gray Eagle Wildlife Preserve

6733 120 Ave, Ottumwa
Adjacent to the Des Moines River, Gray Eagle consists of a series of seasonally flooded wetlands. During spring and fall migration, a high concentration and diversity of waterfowl can be found here.



Johnson/Noel Buckeye Wildlife Area

20th Ave & Bladensburg Rd
This area is an excellent oak/hickory timber and is a great place to take a leisurely hike.



Kirkville Wildlife Area

South of Kirkville on 185th Ave
This area is good for deer and turkey hunting or a great place for a hike and wildlife viewing.



Pearson Park

1160th Ave, NE of Ottumwa
This 36-acre area was donated to the Conservation Board in 2007 and currently consists of a seasonal sunflower field that is great for pictures.



Rock Bluff Park

Rock Bluff Rd NW of Ottumwa
Rock Bluff Park is made up of an upper and lower area along the river. The lower area is an excellent place to bank fish and the upper area is a great place to hike along the river bluff.

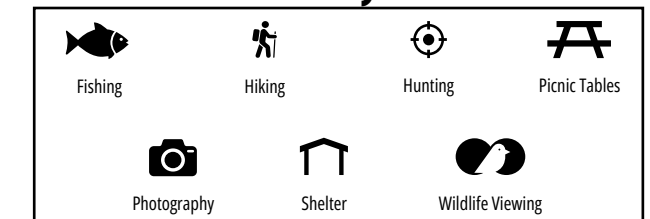


Sycamore Wildlife Area

2 miles N of Ottumwa on Sycamore Rd
Located just outside of Ottumwa, this area offers city residents a chance to get out and explore a natural area with a beautiful 5-acre pond stocked with catfish, bluegill, and bass.



Key



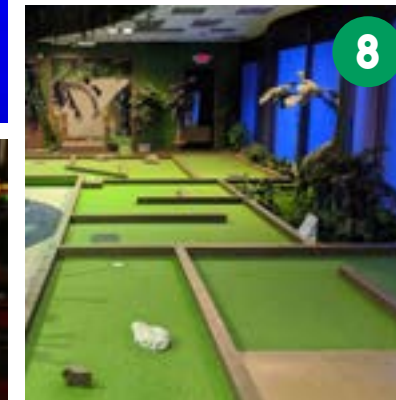
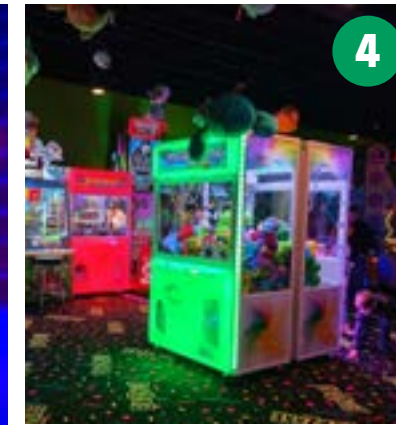
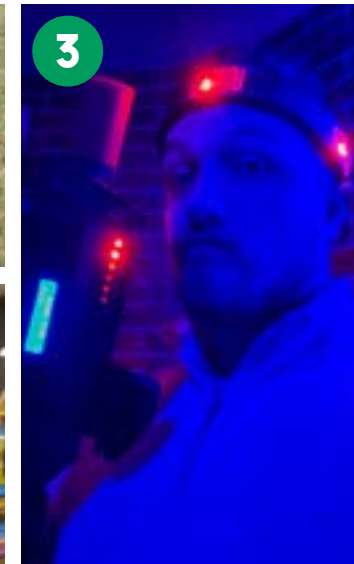
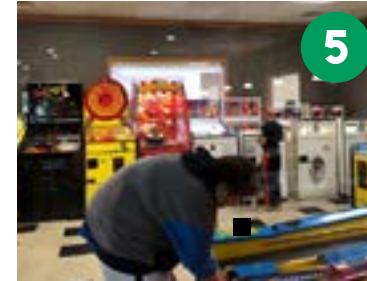
Meet FAMILY FUN



The Beach Ottumwa

Ottumwa's 13-acre water park features a wave pool, slides, kiddie play area, and sand volleyball. The indoor pool is open year-round, and the outdoor water park is open Memorial Day to Labor Day.

Play Local



1

Champion Bowl

2601 Roemer Ave, Ottumwa

Champion Bowl offers daily open bowling along with league bowling. It is also home to a pro shop and serves a variety of food and beverages in their snack bar.

2

BattleBros. Paintball

2504 Little Soap Rd, Bloomfield

The ultimate paintball and nerf experience that is fun for all ages. Gear, paintball markers and gift certificates are available for purchase.

3

Urban Assault LaserTag

1110 N Quincy Ave, Ottumwa

Challenge your friends in Urban Assault LaserTag! Select from a variety of games modes in their brand-new gaming arena.

4

Pizza Ranch FunZone Arcade

1719 Venture Dr, Ottumwa

Play the most exciting games and win sweet prizes at the Pizza Ranch FunZone Arcade. And when you've worked up an appetite, refuel with your favorite pizza or the legendary buffet.

5

Happy Joe's Pizza & Ice Cream

315 Church St, Ottumwa

Happy Joe's offers a large dining area perfect for family gatherings, special events and parties. It's also home to a fun center with games and a prize counter.

6

Mini Mushrooms Play Center

1110 N Quincy Ave, Ottumwa

Mini Mushrooms is an indoor play area located in Quincy Place Mall that is geared toward children 5 and under. They also have a side room that is available to rent for parties.

7

Old School Pinball & Arcade

1110 N Quincy Ave, Ottumwa

Whether you play for fun or to set the new high score, you'll find a variety of both new and old arcade games and pinball machines for the entire family to enjoy!

8

Tee-Rex Mini Golf

1110 N Quincy Ave, Ottumwa

Ottumwa's indoor miniature golf course! Located inside Quincy Place Mall, this dinosaur-themed entertainment is great for the whole family!

Meet OUR SHOPS



Wapello County Farmers Market

Located in Central Addition Park, on Highway 34 just west of the Bark Park, the Wapello County Farmers Market features local vendors with fresh produce, baked goods, jams, eggs, honey, plants, and homemade products. Visit them every Monday and Thursday during the Summer months.

Shop Local



1

Mustard Seed Co.

925 Church St, Ottumwa

Mustard Seed Co. is a family-owned boutique featuring unique styles and home inspirations. Enjoy a great experience of shopping for home, gift and accessories.

2

Bliss Junkie

107 W 2nd St, Ottumwa

Self-described as Ottumwa's hippie studio, Bliss Junkie sells a wide range of incense, flags, tapestries, oils, sage, tie dyed clothing, jewelry and more.

3

Iowa BBQ Store

2827 N Court St, Ottumwa

The Iowa BBQ Store has everything a BBQ enthusiast or aspiring restaurateur may need. They have a large selection of smokers & grills, award-winning rubs & sauces, fuel, grilling accessories & more!

4

The French Flower Eclectic Boutique & Salon

1221 N Court St, Ottumwa

The French Flower is a locally owned boutique that offers a wide variety of gifts. You can find everything from clothing, accessories, kids apparel, toys, and more!

5

Big River Fabric & Gift Co.

223 E Main St, Ottumwa

Big River is an eclectic gift shop specializing in lighting, home decor, and fine gifts with a touch of Asian, Turkish, and European influence. They are also a full-line fabric store.

6

The Sassy Sunflower

2465 Northgate St, Ottumwa

The Sassy Sunflower is a boutique featuring women's clothing, including plus sizes, jewelry, purses, and homemade floral and board designs. It is also home to Ottumwa and Bulldog apparel.

7

The Antler Guys Mercantile Co.

211 E 2nd St, Ottumwa

Buying and selling antlers since 2014, The Antler Guys sell a variety of quality animal products ranging from gifts to home decor.

8

Antiques & Uniques

211 E Main St, Ottumwa

Antiques & Uniques offers a range of quality antiques, collectibles, home decor and gifts. Their inventory is updated regularly.

for a full list of shopping areas, visit meetottumwa.org/explore

Meet OUR FOOD



International Cuisine

Ottumwa's cultural diversity is reflected in its food. You can dine south of the border with over a dozen Mexican restaurants ranging from Tex/Mex to authentic snack shops, go Greek at Mike's Pizza & Steakhouse, get authentic Salvadoran pupusas, or even grab some sushi.

Dine Local



1

Canteen Lunch in the Alley

112 E 2nd St, Ottumwa

Ottumwa's claim to fame, The Canteen has been serving loose-meat sandwiches and home made pie for almost 100 years.

2

Jade Palace

1404 Sherwood Dr, Ottumwa

The number one Chinese restaurant in the Greater Ottumwa Area. They offer quality Chinese food, a great atmosphere for family dinner, and private room for parties.

3

Morgan's Corner Bar & Grill

436 W 2nd St, Ottumwa

Morgan's Corner has been serving up a better kind of pub grub for 10 years and counting. Stop in for a bloody mary or grab a burger that has been named one of the best in the state!

4

Graham's Dairy Freez

211 E 2nd St, Ottumwa

Graham's is Ottumwa's sweetest secret! Serving soft-serve specialties at great prices, including sundaes, shakes, parfaits, cones, flurries and slushies.

5

Juanita's Pupuseria

537 Church St, Ottumwa

One of Ottumwa's best hidden gems, Juanita's is a small diner that gives you a delicious home cooked Salvadoran experience.

6

Mike's Pizza & Steakhouse

2517 Northgate St, Ottumwa

At Mike's Pizza & Steakhouse, they pride themselves on preparing a delicious meal for every customer, every time. In addition to steakhouse fare, you'll also find authentic Greek specialties on their menu.

7

Mimi's Taqueria

707 Church St, Ottumwa

Mimi's serves authentic Mexican cuisine and was voted "Iowa's Best Hometown Taco Award" by blogger Iowa Gallivant. Take it outside and enjoy patio dining during the warmer months.

8

Warehouse Barbecue Co. & Brewhosue

1221 N Court St, Ottumwa

If you're looking for great barbecue and refreshing cocktails in a fun, modern, fast-paced environment, then Warehouse is the perfect place for you.

for a full list of dining options, visit meetottumwa.org/dining

Meet OUR LODGING



Oak Meadow Delight Bed & Breakfast

Oak Meadow Delight Bed & Breakfast is Ottumwa's finest lodging. Each of their four beautiful guest rooms is private & elegant for guests who desire true comfort, high quality, & outstanding service.



AmericInn by Wyndham

Hotels



AmericInn by Wyndham

222 W 2nd St, Ottumwa
641.226.5568
wyndhamhotels.com
54 rooms



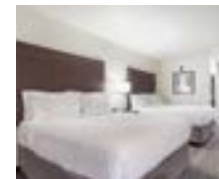
Hotel Ottumwa

107 E 2nd St, Ottumwa
641.682.8051
hotellottumwa.com
61 rooms



The Village in Eddyville

708 Mill St, Eddyville
440.361.5157
airbnb.com
4 rooms



Cobblestone Hotel & Suites

108 Church St, Ottumwa
Coming Summer 2023
cobblestonehotels.com
83 rooms



Quality Inn & Suites

125 W Joseph Ave, Ottumwa
641.682.8526
choicehotels.com
82 rooms



Days Inn by Wyndham

2824 N Court St, Ottumwa
641.954.5122
wyndhamhotels.com
44 rooms



Super 8 by Wyndham

2823 N Court St, Ottumwa
641.455.0016
wyndhamhotels.com
62 rooms



Hampton Inn

943 N Quincy Ave, Ottumwa
641.814.8888
hilton.com
77 rooms



SureStay Plus Hotel

2813 N Court St, Ottumwa
641.682.0000
bestwestern.com
45 rooms 16 suites



Holiday Inn Express & Suites

941 N Quincy Ave, Ottumwa
641.814.4500
igh.com
97 rooms



Bed & Breakfasts



Oak Meadow Delight

2814 Oak Meadow Dr, Ottumwa
641.682.0580
oakmeadowdelightbnb.com
4 rooms

Campgrounds



Greater Ottumwa Park

1 Joe Lord Memorial Dr, Ottumwa
641.682.1307
ottumwa.us
340 acres



Pioneer Ridge Nature Area

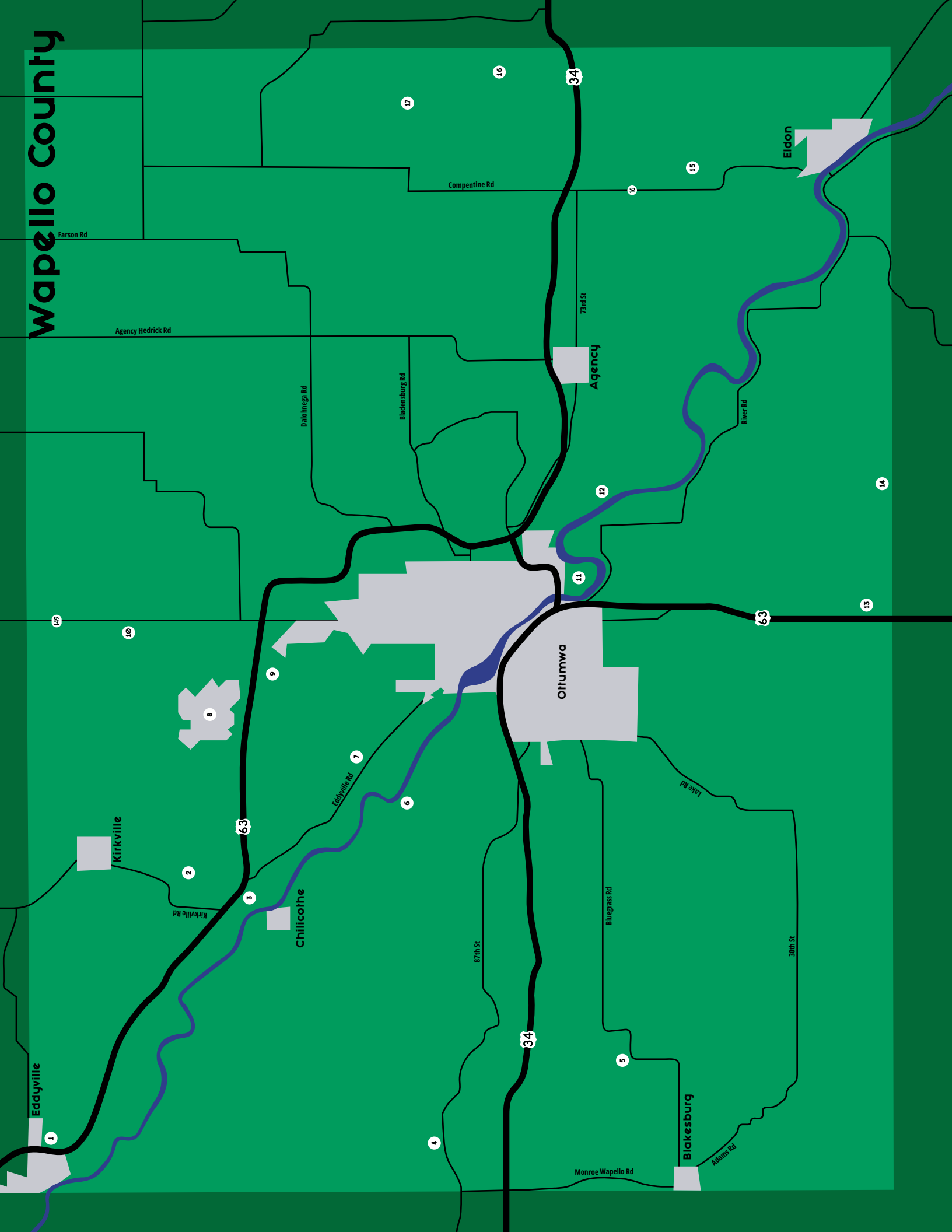
1339 Hwy 63, Bloomfield
641.682.3091
mycountyparks.com
2 modern cabins, 2 rustic cabins,
9 electric campsites, 3 primitive
campsites



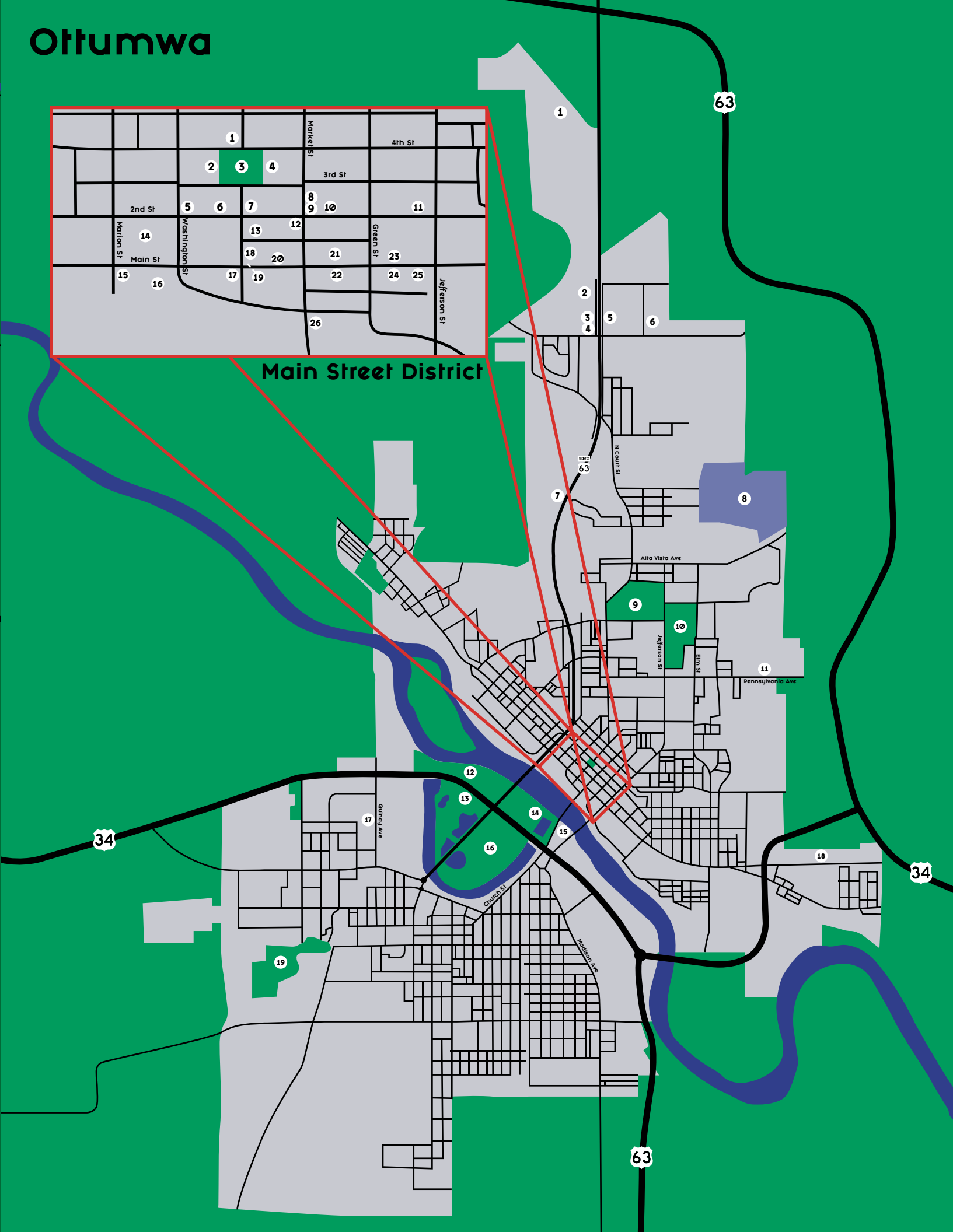
Key



Wapello County



Ottumwa



Eldon

Eddyville

16

63

9th St

River Rd

Elm St

County Line

walnut

Main

8th St

182 St

16

137

2

3

4

5

6

7

8

11

10

9

12

13

1

1

10

7

6

5

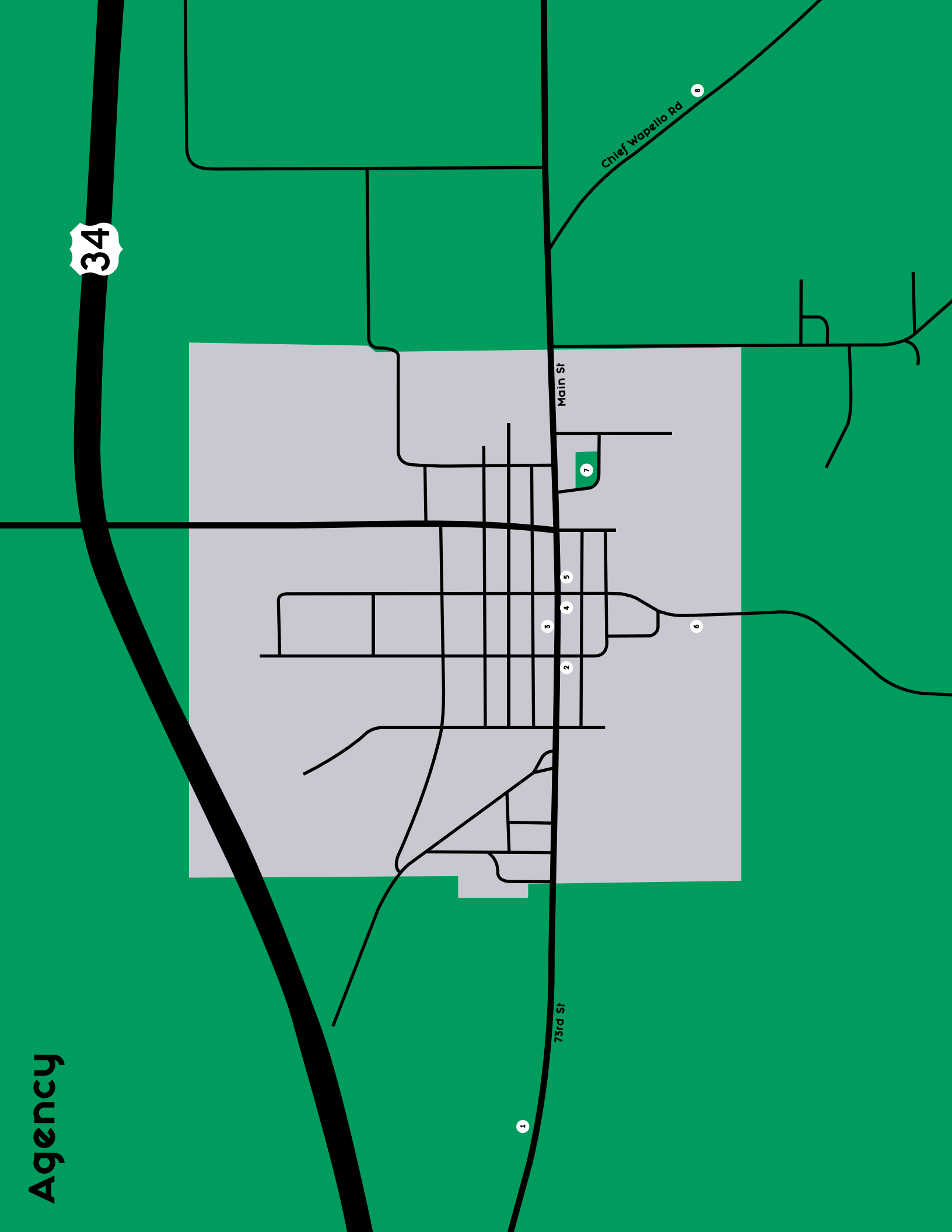
8

4

3

2

137



County

1. Eddyville Sand Dunes Prairie
2. Kirksville Wildlife Area
3. Curtis King Gravesite
4. Swedish American Immigrant Memorial
5. Antique Airfield/Air Power Museum
6. Rock Bluff Park
7. Pearson Park
8. Ottumwa Regional Airport
9. Sycamore Wildlife Area
10. DeVol Wildlife Area
11. Gray Eagle Wildlife Preserve
12. Garrison Rock Resource Management Unit
13. Pioneer Ridge Nature Area
14. Mars Hill Church & Cemetery
15. Cardinal Wildlife Area
16. Bluewing Marsh Nature Area
17. Johnson/Noel Wildlife Area

Ottumwa

1. Cedar Creek Golf Course
2. Quality Inn & Suites
3. Super 7 by Wyndham
4. Surestay Plus by Best Western
5. Days Inn by Wyndham
6. Oak Meadow Delight Bed & Breakfast
7. Iowa Heartland History Connection
8. Indian Hills Community College
9. Ottumwa Cemetery
10. Memorial Park
11. Ottumwa Regional Health Center
12. Bark Park
13. Campgrounds
14. Beach Ottumwa
15. Bridge View Center
16. Greater Ottumwa Park
17. Holiday Inn Express/Hampton Inn
18. Champion Bowl
19. Wildwood Park

Main Street

1. Wapello County Courthouse

2. Ottumwa Public Library
3. Central Park
4. City Hall
5. Hub Coffee
6. Bliss Junkie
7. Hotel Ottumwa
8. Tequila Grill
9. S & S Island Mart
10. The Antler Guys Mercantile Co.
11. Las Palmas Bar & Grill
12. Agape African American Market
13. Canteen Lunch in the Alley
14. AmericInn
15. Coal Palace Cafe & Books
16. Amtrak Depot
17. Corner Collectibles
18. Owl's Nest Bar & Grill
19. Flea Market on Main
20. The Stitch Doctor
21. Antiques & Uniques
22. The Sewing House
23. Cerro Grande Meat Market
24. Spud's Emporium of Comics & Games
25. My Chic Boutique
26. Skate Park

- McKee Coins
- Polar Xpress
- Big River Fabric & Gift Co.
- Twin Galaxies Plaque
- Top Hat Coffee & Entertainment
- El Rancho Grande
- Tip Top Treasures
- Be Shabby Home Decor & More
- Appanoose Rapids Mercantile

Eldon

1. American Gothic House & Center
2. Eldon Public Library
3. Eldon Mural/City Hall
4. Ono Casa Americana
5. McHaffey Opera House
6. Chommy's
7. Eldon Veterans Memorial

8. Rock Island Train Depot
9. Ace Graphics & The Corner Store
10. KD Center
11. Scenic Overlook
12. Wapello County Fairgrounds
13. Ostrander Flowers & Greenhouse

Eddyville

1. Sandy Dunes Disc Golf Course
2. The Village in Eddyville
3. Eddyville Historical Museum
4. Ford's Pub & Grill
5. Welcome Inn Bar & Grill
6. Melody's Kitchen
7. The Hen House Cafe
8. Eddyville Public Library
9. Soldier in the Park
10. Eddyville Sand Dunes

Agency

1. Manny's Smoke Shack
2. Whitetail Outdoors
3. Empowered Nutrition
4. Agency Community Center
5. City Hall/Library
6. The Soldier
7. Lions Park
8. Chief Wapello Gravesite & Memorial Park



102 Church St,
Ottumwa, IA 52501
641.684.4303 | www.meetottumwa.org



Meet Ottumwa is a full-service convention and visitors bureau serving Wapello County from the lobby of Bridge View Center. We ...

- interact with visitors to the community
- help organize conferences and conventions
- support and promote local businesses

We can't wait to meet you!

102 Church St.
Ottumwa, IA 52501
www.meetottumwa.org
(641) 684-4304

